

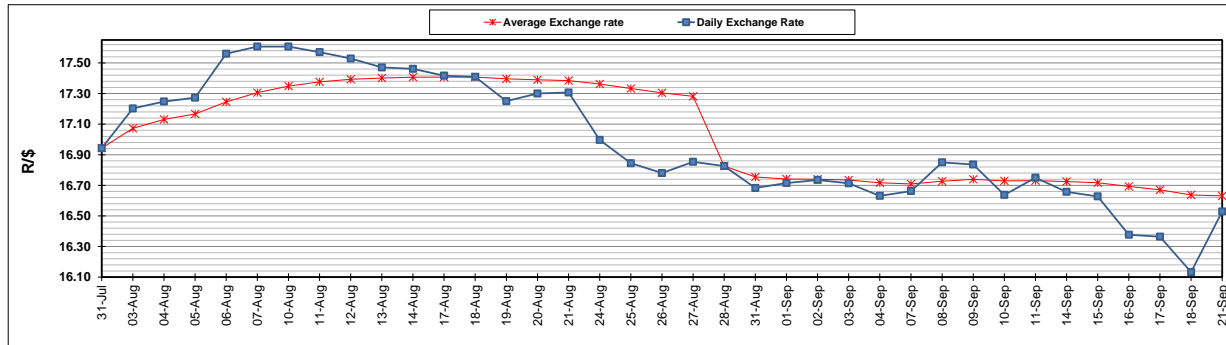
	PETROL 95 ULP	PETROL 93 ULP & LRP	DIESEL 0.05%	DIESEL 0.005%	ILL. PAR.
GAUTENG PUMP PRICE (SA c/l) AS FROM 02/09/2020	1,518.000	1,489.000	-	-	-
WHOLESALE PRICE (SA c/l) AS FROM 02/09/2020	-	-	1,327.560	1,331.960	716.828
SINGLE NATIONAL MAXIMUM RETAIL PRICE	-	-	-	-	899.000
BASIC FUEL PRICE - 21/09/2020 (SA c/l)	528.915	517.802	476.820	478.769	434.201
PRESS RELEASE CONTRIBUTION TO BFP 02/09/2020 - 21/09/2020 (SA c/l)	565.470	546.470	576.630	581.030	512.128
UNIT OVER/(UNDER) RECOVERY - 21/09/2020 (SA c/l)	36.555	28.668	99.810	102.261	77.927
AVERAGE BASIC FUEL PRICE 28/08/2020 - 21/09/2020	530.425	520.230	490.129	492.195	433.909
AVERAGE UNIT OVER/(UNDER) RECOVERY 28/08/2020 - 21/09/2020	35.804	26.998	90.206	92.541	82.807

ANALYSIS MOVEMENT OF AVERAGE OVER/(UNDER) RECOVERY

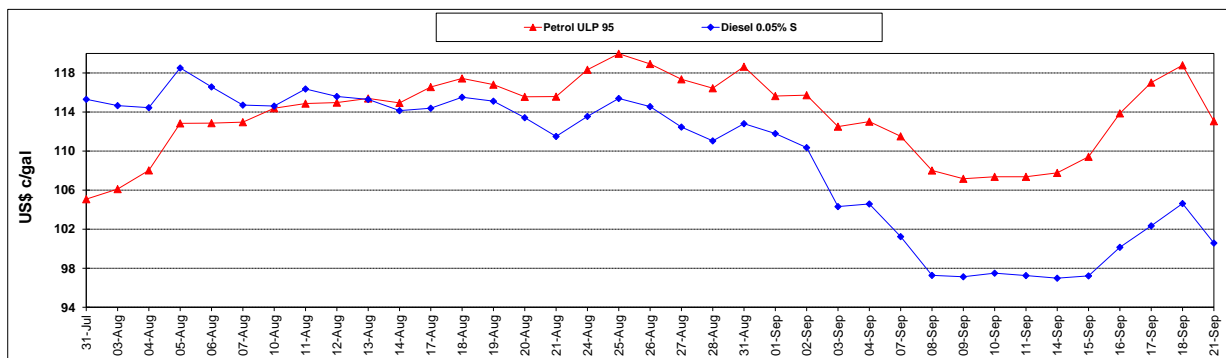
	PETROL 95	PETROL 93	DIESEL 0.05%	DIESEL 0.005%	ILL. PAR.
- MOVEMENT IN INTERNATIONAL PRODUCT PRICES	15.060	6.654	71.039	73.292	65.838
- MOVEMENT IN EXCHANGE RATE	20.744	20.345	19.168	19.249	16.969
AVERAGE UNIT OVER/(UNDER) RECOVERY 28/08/2020 - 21/09/2020	35.804	26.998	90.206	92.541	82.807

R/\$ EXCHANGE RATE - (R/\$16.5290 - 21/09/2020)

EXCHANGE RATE USED IN BASIC FUEL PRICE



INTERNATIONAL PRODUCT PRICES OF BASKET USED IN BASIC FUEL PRICE



BASIC FUEL PRICE IN SA CENTS PER LITRE

